



*Thurgoland
Farm*



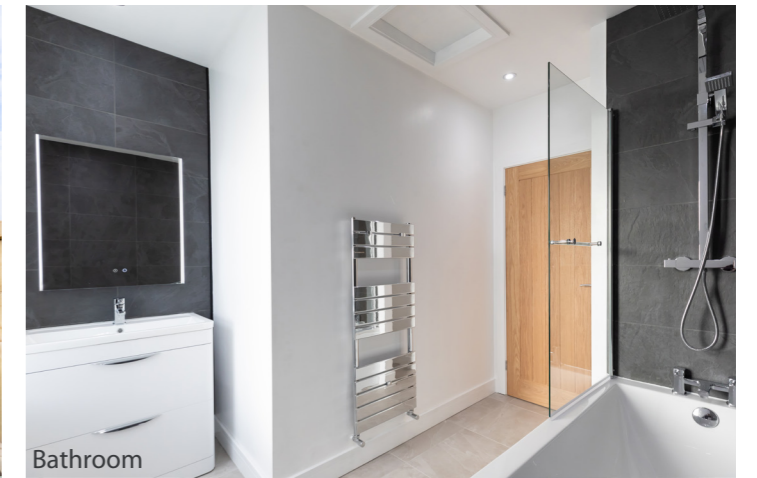
Kitchen Diner



Living Room



Private Lawn and Driveway



Bathroom

Restored, renovated, and reborn from a beautiful old farmhouse: Thurgoland Farm.

In the leafy heights of Thurgoland, south of Penistone, this gorgeous old farmhouse has been lovingly modernised into an exceptional two bed family home.

This charming property was restored by one of our most exciting new homes developers, who have a real eye for restoring unique structures across South Yorkshire, Swift Homes.





Bedroom 1



Bathroom



Bathroom



Bedroom 2



Converted Cellar



Living Room



Kitchen Diner



Kitchen Diner

Time to Explore:

Thurgoland Farm enjoys an idyllic position in the charming community of its namesake Thurgoland. Surrounded by exceptional scenery you will not be wanting for green space and a retreat into nature. You will find you have the Peak District itself only a moment's drive from your doorstep and even closer to home there are near boundless country walks, including a junction onto the Pennine Trail making this home a dream for those looking to really explore.

Thurgoland itself is a welcoming place to call home with several highly regarded schools from nursery through to grammar. Thurgoland C of E primary school has an Ofsted rating of "outstanding" and Penistone Grammar School which is a 10-minute drive away has an Ofsted rating of "Good". Stepping further from your door the proximity to Stocksbridge gives you ready access to the exceptionally popular Fox Valley retail park for all your shopping needs. Thurgoland's handy position makes it particularly convenient for the M1, Penistone, & Barnsley for those looking for a commuter home surrounded by nature without sacrificing routes out to Sheffield, Doncaster and Manchester.

Step inside your new home:

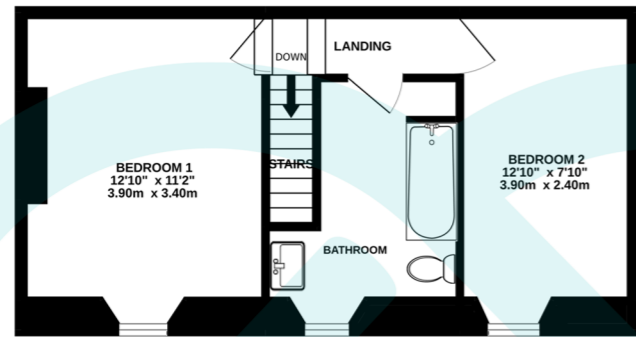
Thurgoland Farm is an impressive stone-built farmhouse that has been given an incredible new lease of life. Restored and fully renovated by the team at Swift Homes it is now a polished two-bed, ready and waiting for a new family to call it home.

The ground floor features a bright lounge with a feature fireplace and deep windows. It is accompanied by the gorgeous modern kitchen diner with a door leading to the driveway and a neat little garden to the side of the home. A tremendous benefit of the restoration is the conversion of the basement into a remarkable snug. Adding this occasional room to the floorplan of an already majestic home affords you space for a range of purposes; it would make an ideal playroom for the kids or perhaps a games room or hobby space.

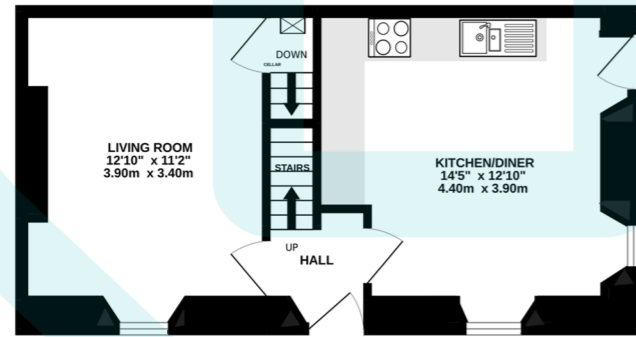
Upstairs the first floor affords you two stunningly bright double bedrooms at each side of the home. Between them is the elegant family bathroom, with a sleek finish including an illuminated heated mirror and a striking mirrored towel rail.



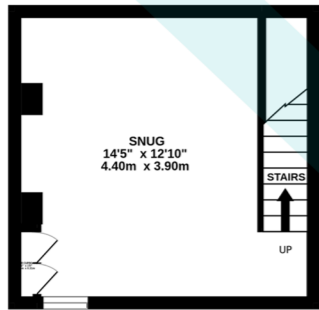




1ST FLOOR
379 sq.ft. (35.2 sq.m.) approx.



GROUND FLOOR
373 sq.ft. (34.6 sq.m.) approx.



BASEMENT
174 sq.ft. (16.2 sq.m.) approx.

TOTAL FLOOR AREA : 926 sq.ft. (86.1 sq.m.) approx.



Score	Energy rating	Current	Potential
92+	A		
81-91	B		86 B
69-80	C	73 c	
55-68	D		
39-54	E		
21-38	F		
1-20	G		

This floor plan is for illustrative purposes only.
 All measurements and layouts are approximations and do not necessarily capture the precise specifications of the property.
 No responsibility is taken for any error, omission, or misstatement.
 We always recommend viewing in person to confirm the exact floor plan of a property.



available exclusively from
morfittsmith

The MorfittSmith Building
67 Middlewood Road
Hillsborough
Sheffield S6 4GX
newhomes@morfittsmith.co.uk
0114 232 1764

IMPORTANT: We would like to inform prospective purchasers that these sales particulars have been prepared as a general guide only. A detailed survey has not been carried out, nor the services, appliances and fittings tested. Room sizes should not be relied upon for furnishing purposes and are approximate. Floor plans are for guidance only and illustration purposes only and may not be to scale. If there are any important matters likely to affect your decision to buy, please contact us before viewing the property.